

NEW

Soliroc™

Think robustness



SOLUTIONS FOR EXPOSED OR UNSUPERVISED ENVIRONMENTS

 **legrand®**

Think robustness | for all your projects

The new IK 10 Soliroc guarantees all-out robustness in exposed or unsupervised premises, both indoors and outdoors.

- Warehouses
- Open spaces
- Motorway rest areas
- Offices
- Shops
- Schools
- Detention centres
- etc.



RESTRICTED ACCESS PREMISES | Card reader



SHOP FRONTS | Keyswitch



PUBLIC WASHROOMS | Automatic switch



SPORTS FACILITIES | Illuminated pushbutton



WAREHOUSES | 2P+E socket + RJ 45 network socket



PARKS & GARDENS | 2P+E socket with locked cover



SCHOOLS | Mosaic adaptor with cover (here, Mosaic HD 15 socket)



OFFICES | Pushbutton with label-holder



SHOPPING MALLS | 2P+E socket with cover

Safe, reliable | and easy to install

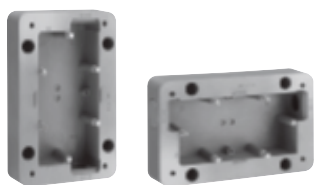
Smoothly combinable with Batibox boxes, Soliroc enjoys the full benefit of Legrand's experience and know-how, especially as regards controlled and simplified installation.



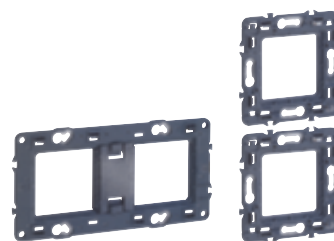
Legrand flush-mounting box BATIBOX (multi-material)



3 FLUSH-MOUNTING BOX VERSIONS |
Accept all the Soliroc functions



SOLIROC 1- AND 2-GANG SURFACE BOXES |
For surface-mounting installation



UNIVERSAL SUPPORT FRAME |
Just snap on any Soliroc mechanism
Horizontal and vertical* 71 mm fixing centre
* Vertical only by association of 1-gang support



AUTOMATIC CONNECTION MECHANISMS |
10 switches and push buttons come with automatic terminals to save you precious time on installation

FLUSH-MOUNTING BOXES

UNIVERSAL SUPPORTS



COVER PLATES |
Supplied with a protective shell



MOSAIC ADAPTOR |
For fitting Mosaic functions



METAL ALLOY |
Finishing plate for guaranteed toughness in 1-, 2- or 3-gang (horizontal or vertical mounting)

SMOOTH TRANSITION |
Between plate and cover plate, preventing a firm grasp on the device

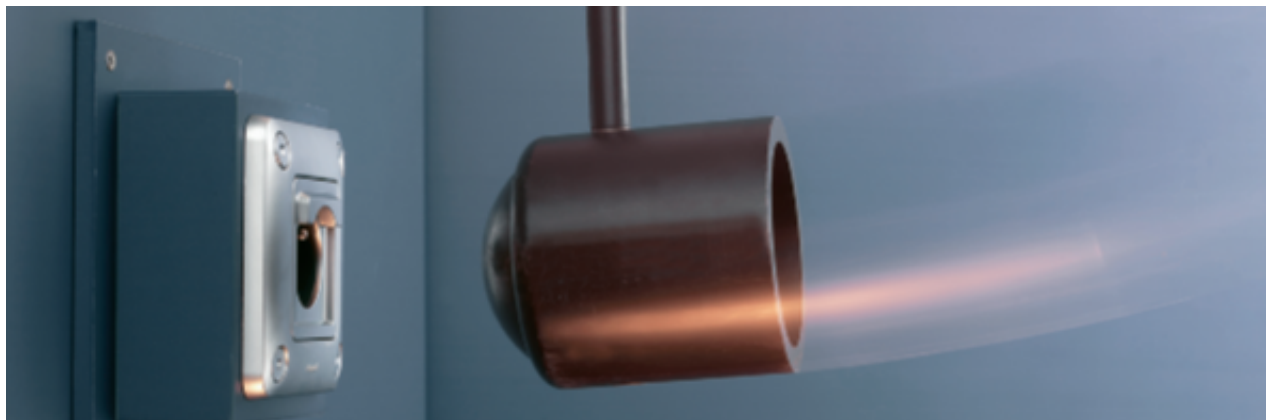


BLANKING PLUGS |
To cover the 4 fixing points

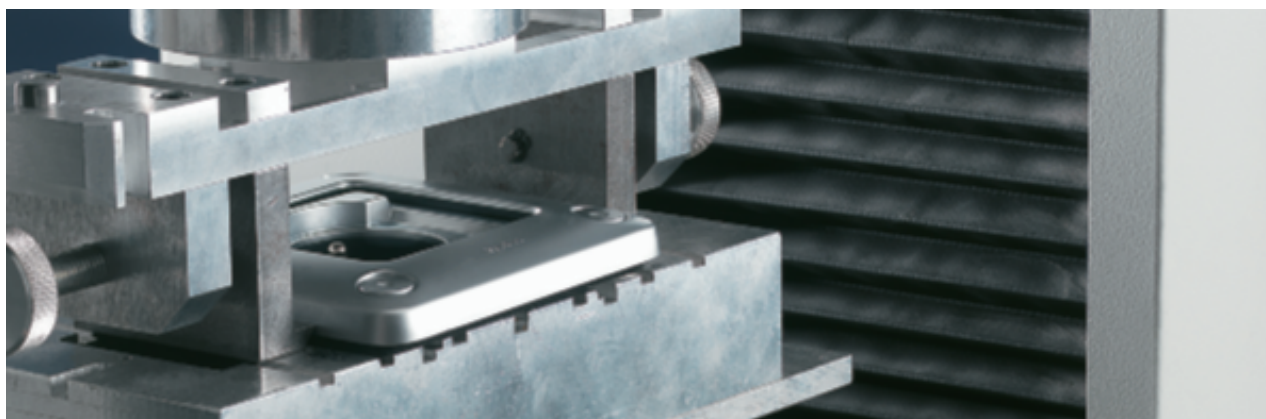
SOLIROC™

IK 10 | The promise of robustness

All Soliroc products have successfully undergone the severest tests to ensure we can offer you maximum security.



IK 10: MAXIMUM IMPACT RESISTANCE | All products can withstand impacts of 20 joules



IK 10: MAXIMUM PULL-OFF RESISTANCE | Rounded plate shape to prevent a firm grasp



IP 55: GUARANTEED WEATHERPROOF | On the main functions required for outdoor installations

SELECTION CHART

DESCRIPTION	CATALOGUE No.
Switches 10 AX – 250 V~ – IP 55	
2-way switch	778 11
Double-pole switch	778 22
Intermediate switch	778 21
2-way switch with indicator	778 14
Illuminated 2-way switch	778 12
Time-delayed switch – IP 55	
Without neutral, 2-wire – 1 000 W	778 23
Automatic switches – IP 55	
With neutral, 3-wire – 1 000 W	778 25
Without neutral, 2-wire – 400 W	778 27
Pushbuttons 6 A – 230 V~ – IP 55	
Two-way pushbutton	778 41
Two-way pushbutton with indicator	778 44
Illuminated two-way pushbutton	778 42
Two-way pushbutton with label-holder	778 43
French standard socket outlets – 16 A – 250 V~	
2P+E with automatic terminals and cover – IP 55	778 31
2P+E with automatic terminals and locked cover – IP 55	778 33
2P+E with automatic terminals, no cover – IP 20	778 32
German standard socket outlets – 16 A – 250 V~ – IP 55	
2P+E with safety shutter, screw terminals and cover	778 35
2P+E with safety shutter, screw terminals and locked cover	778 37
Other functions	
2-position keyswitch – European barrel – IP 54	778 74
3-position key-operated pushbutton – European barrel – IP 54	778 75
Card reader – IP 55	778 77
Illuminated sign 230 V~ – IP 55	778 68
Passage lighting – IP 55	778 67
Male TV socket 0-2 400 MHz – IP 20	778 82
Cat. 6 RJ 45 socket – FTP – IP 20	778 91
Plates	
1-gang plate 110 x 110 mm	778 51
2-gang plate 110 x 181 mm	778 52
3-gang plate 110 x 252 mm	778 53
Surface-mounting boxes	
1-gang 110 x 110 x 45 mm	778 90
2-gang 110 x 181 x 45 mm	778 92
Accessories	
Replacement blanking plugs	778 96
Soliroc adaptor for Mosaic functions with cover – IP 55	778 80
Soliroc adaptor for Mosaic functions without cover – IP 20	778 81



NEW



Soliroc™
lighting control units

Soliroc™
other controls



778 11



778 25



778 74



778 77

Suitable for public buildings, unsupervised passageways, car parks, communal areas in buildings
High resistance to IK 10 impacts and humidity
4 fixing points by plugging the plate directly on the wall and 4 blanking plates to be force-mounted on the plate (can only be removed by drilling)
Mechanisms supplied complete with cover plates

Suitable for public buildings, unsupervised passageways, car parks, communal areas in buildings
High resistance to IK 10 impacts and humidity
4 fixing points by plugging the plate directly on the wall and 4 blanking plates to be force-mounted on the plate (can only be removed by drilling)
Mechanisms supplied complete with cover plates

Switches 10 AX - 250 V_~ - IK 10 - IP 55

Pack	Cat.Nos		
1	778 11		2-way switch
1	778 21		Intermediate switch
1	778 12		Illuminated 2-way switch Supplied complete with lamp Cat.No 676 66
1	778 14		2-way indicator switch Supplied complete with lamp Cat.No 676 68
1	778 13		2-way switch with label holder
1	778 22		Double pole switch

Time-delayed switch - IK 10 - IP 55

Pack	Cat.Nos		
1	778 23		Without neutral, 2-wire - 1000 W For controlling 1000 W incandescent and halogen lighting 230 V _~ , 400 VA ELV halogen fluo lighting For controlling a motor (eg: Ventilation) - 250 VA Time delay from 25 secondes to 15 minutes

Automatic switches - IK 10 - IP 55

1	778 25		Infrared detection Detection range adjustable from 3 m to 10 m Horizontal detection angle: 180° Light level threshold adjustable from 3 to 1000 lux Time delay adjustable from une seconde to 16s with repetition of cycle as long as movement is detected Remote manual control possible with normally closed pushbutton Integrated self-protection against overloads and short-circuits Should preferably be installed in box depth 50 mm With neutral, 3-wire 1000 W For controlling lamps: - Up to 1000 W, incandescent and halogen 230 V _~ - Up to 500 VA, ELV halogen via ferromagnetic or electronic transformer - Fluo 500 VA Can control a ventilation appliance (100 VA max.)
1	778 27		Without neutral, 2-wire 400 W Can be installed as a replacement for a conventional switch without additional wiring For controlling lamps: 40 W min. to 400 W max. incandescent, halogen 230 V _~ or ELV halogen with ferromagnetic or electronic transformer

Keyswitches - IK 10 - IP 54

1	778 74		To be equipped with european key barrel Cat.No 697 95 To be fitted with flush-mounting boxes depth 50 mm (Cat.No 801 01) 2-position keyswitch 2 NO contacts - 6 A - 230 V Key can be removed in either position
1	778 75		3-position key-operated pushbutton Changeover switch with off position - 6 A - 230 V Key can be removed in off position

Pushbuttons 6 A - 230 V_~ - IK 10 - IP 55

1	778 41		Two-way pushbutton NO-NC contact
1	778 42		Illuminated two-way pushbutton NO-NC contact Supplied complete with lamp Cat.No 676 66
1	778 44		Two-way pushbutton + indicator light NO-NC contact Supplied complete with lamp Cat.No 676 68
1	778 43		Two-way pushbutton with label-holder NO-NC contact

Card reader - IK 10 - IP 55

1	778 77		To be fitted with flush-mounting boxes 40 mm (Cat.No 801 02) Operates in self-powered or centralised mode on a controller Cat.No 767 04 Accepts iso format smart cards (Cat.No 767 11) or card key fobs (Cat.No 767 10) Supplied with Soliroc plate Technical characteristics identical to Cat.No 767 02
---	--------	--	--

Illuminated sign 230 V_~ - IK 10 - IP 55

1	778 68		Mechanism incorporating white LEDs and a pivoting window which can take pre-printed labels 2 choices of power rating (0,2 W or 1 W)
---	--------	--	--

Passage lighting - IK 10 - IP 55

1	778 67		To be fitted with flush-mounting boxes 40 mm (Cat.No 801 02) For lighting a staircase, etc 250 V _~ Supplied complete with: - Soliroc plate 5 modules - 1 set of 4 blanking plates that can be removed by drilling Mechanism: screw fixing in flush-mounting boxes, depth 40 mm Supplied with: - 16 white LEDs (2 W) - 1 x 5 modules Batibox support
---	--------	--	---

Catalogue numbers in red: New products.

NEW

Soliroc™
sockets, cable outlets

Soliroc™
plates, surface-mounting boxes, accessories



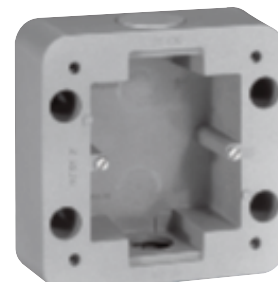
778 31



778 91



778 51



778 90



778 80 + 792 57

Suitable for public buildings, unsupervised passageways, car parks, communal areas in buildings
High resistance to IK 10 impacts and humidity
4 fixing points by plugging the plate directly on the wall and 4 blanking plates to be force-mounted on the plate (can only be removed by drilling)
Mechanisms supplied complete with cover plates

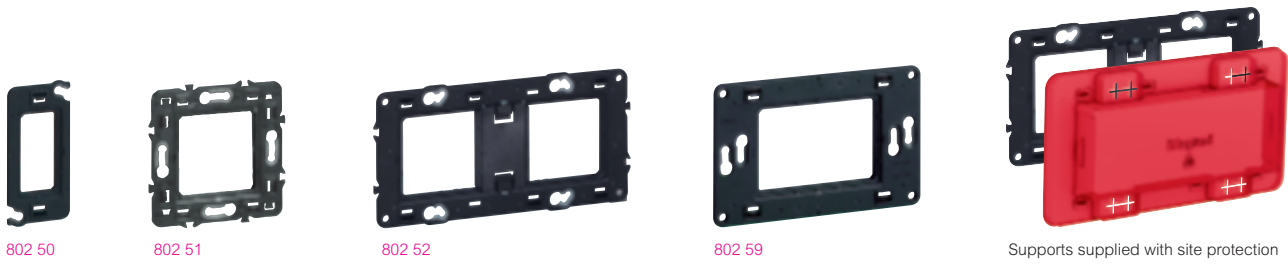
Pack	Cat.Nos	Socket outlets - IK 10
1	778 35	German standard 16 A - 250 V 2P+E with safety shutter, screw terminals and cover IP 55
1	778 36	2P+E with safety shutter, screw terminals, no cover IP 20
1	778 37	2P+E with safety shutter, screw terminals and locked cover IP 55
1	778 31	French standard 16 A - 250 V 2P+E with automatic terminals and cover IP 55
1	778 33	2P+E with automatic terminals and locked cover IP 55
1	778 32	2P+E with automatic terminals, no cover IP 20
1	778 82	TV socket - IK 10 - IP 20 Male TV socket 0-2400 MHz
1	778 91	Network socket - IK 10 - IP 20 Cat.6 RJ 45 socket - FTP
1	778 50	Cable outlet - IK 10 - IP 55 Supplied with cable grip

Pack	Cat.Nos	Plates - IK 10
1	778 51	1-gang plate 110 x 110 mm
1	778 52	2-gang plate 110 x 181 mm Horizontal or vertical mounting 71 mm fixing centres
1	778 53	3-gang plate 110 x 252 mm Horizontal or vertical mounting 71 mm fixing centres
		Surface-mounting boxes Cannot be used for Cat.Nos 778 74/75 Supplied with 4 blanking plugs Take ISO 20 protective conductors
1	778 90	1-gang 110 x 110 x 45 mm
1	778 92	2-gang 110 x 181 x 45 mm Horizontal or vertical mounting 71 mm fixing centres

Pack	Cat.Nos	Accessories
5	778 96	Replacement blanking plugs Can only be removed by drilling Set of 4
		Seals for surface correction Made of foam to compensate for unevenness of the wall
1	778 85	For 1-gang plate
1	778 86	For 2-gang plate
1	778 87	For 3-gang plate
1	778 66	Blanking plate 2 modules
		Adaptor for Mosaic functions Take 2-module Mosaic mechanisms (except special surface-mounting type)
1	778 80	Adaptor with cover - IP 55 - IK 10
1	778 81	Adaptor without cover - IP 20

Catalogue numbers in red: New products.

universal supports



Supports for fixing, Céliane, Mosaic, Soliroc ranges in flush-mounting boxes

Pack	Cat.Nos	Batibox screw fixing supports
10	802 50	For 71 mm fixing centres (except Cat.No 802 50 and 802 59) Supplied with site protection Bi-material supports for enhanced rigidity Equipped with removable spacers for installation of Céliane and Mosaic only For 1 module
10	802 51	For 1 gang - 2 modules Universal support for mounting on all types of screw-mounting boxes Can be used to make up multi-gang configurations by joining boxes vertically and horizontally Cutable support for adapting to Italian type boxes with 57 mm fixing centres
5	802 59	For 3 modules
10	802 52	For 2 gang - 4/5 modules Horizontal or vertical mounting
5	802 53	For 3 gang - 6/8 modules Horizontal or vertical mounting
5	802 54	For 4 gang - 10 modules Horizontal or vertical mounting
5	802 64	For 2x2 gang 2 x 4/5 modules
5	802 66	For 2x3 gang 2 x 6/8 modules

Pack	Cat.Nos	Screw fixing supports
10	802 13	For Italian type boxes Supplied with screws 3 modules
5	802 14	4 modules
5	802 16	6 modules
		Claw fixing supports
10	802 61	Supplied with site protection Bi-material supports for enhanced rigidity For 1 gang - 2 modules With claws length 27 mm
10	802 69	With claws length 37 mm

Pack	Cat.Nos	Spacer for Batibox supports
10	802 97	Can compensate for imperfections in the wall and ensure the plates are held strongly in position For 1 gang support Cat.Nos 802 51/61/69 and multi-gang supports in 71 mm fixing centres

Red catalogue numbers: New products



**World Headquarters
and International Department**
87045 Limoges Cedex - France

☎ : + 33 (0) 5 55 06 87 87
Fax : + 33 (0) 5 55 06 88 88
www.legrandgroup.com

EXB09018